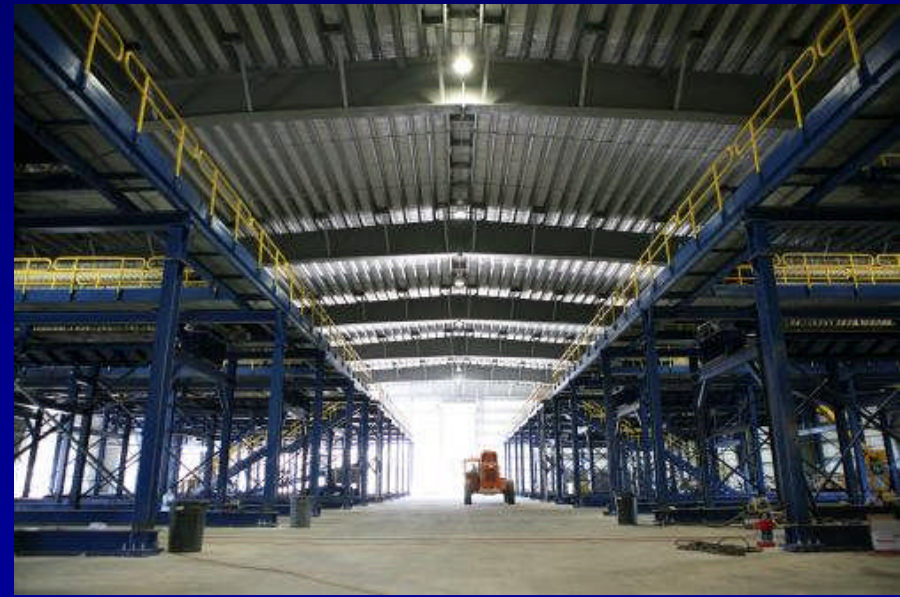


Update Hudson River PCB Superfund Project

Community Advisory Group Meeting
December 9, 2008



Prior to Construction (April 07)

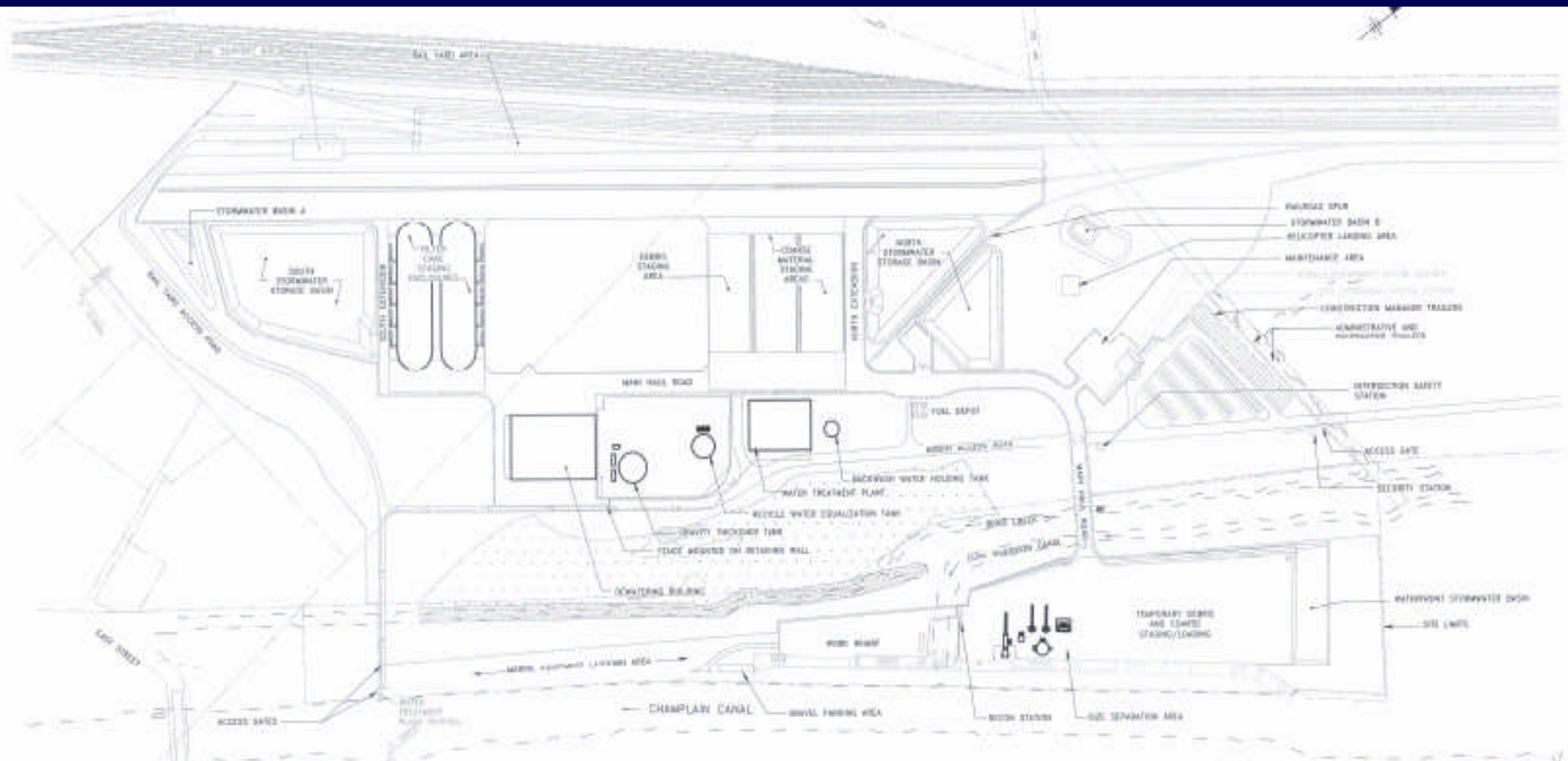


HUDSON RIVER SEDIMENT PROCESSING
AND TRANSPORTATION FACILITY
D.O.P: 04/22/07 SCALE: 1"=100'

Facility (Summer 2008)



Facility

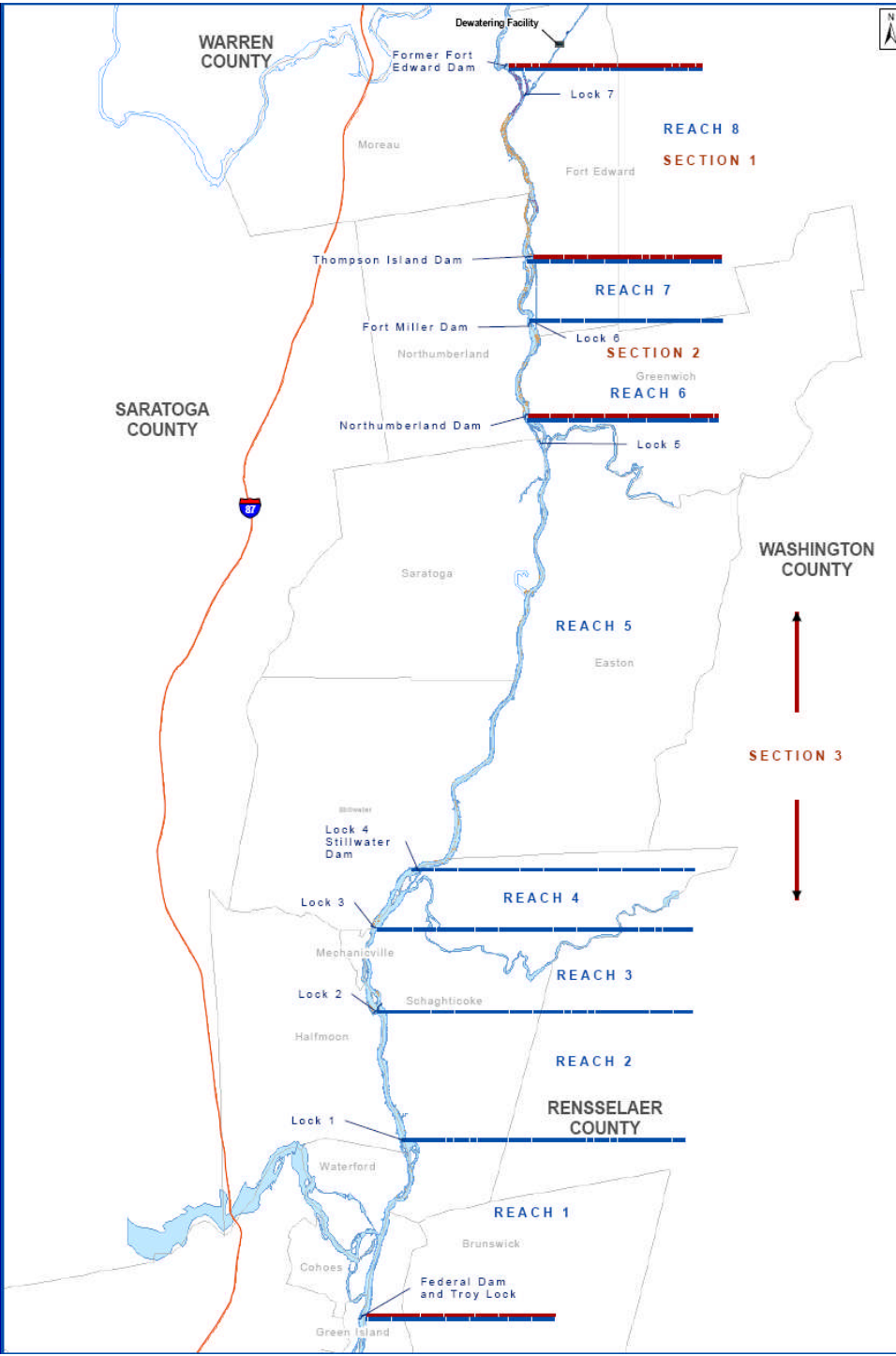


Summary Floodplain Sampling Work

Background

- Area from Fort Edward to Mohawk River at Troy
- Some sampling has been done on floodplains in past (about 630 samples)
- Last summer interim remedial measures were done on 15 properties (10 include caps)
- EPA did survey of human use areas along the river (Summer 2007)
- Negotiations with GE occurred earlier this summer to perform the sampling
 - included review of sample locations
- Order on consent (September 8, 2008)
- Field sampling plan
- Data will be used to supplement a RI (to be done in the future)





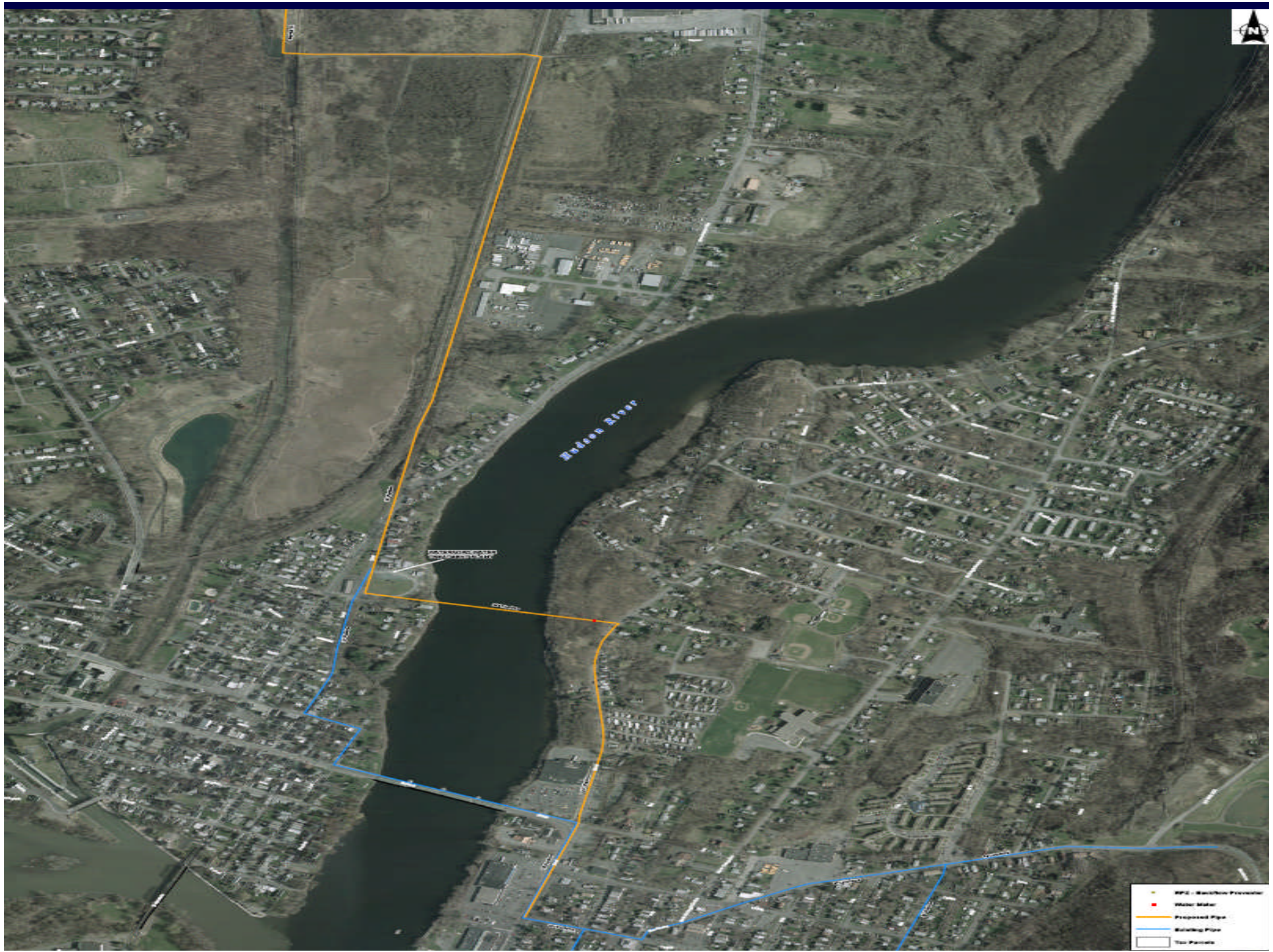
Summary Floodplain Sampling Work

- 280 properties
- Approx 1000 locations
 - 0-6 inches
 - 6-12 inches
 - 12-24 inches (% of the upper depth samples)
 - Including QA/QC
- 2200 samples collected
- EPA samples
 - 48 properties
 - 57 locations
 - 144 samples



Summary of Waterline Construction

- 4 ½ miles of pipe
- 38 % complete
- 11,065 ft of pipe in-ground
- 4,232 ft of restoration
- 5,213 ft pressure tested







Questions



Facility Tour

